

OhioHealth Trauma Care

As central Ohio's trauma experts, *WE* provide the greatest access for patients to receive comprehensive trauma care. Hospitals around the state and region refer to us to provide life-saving trauma services.

Our multidisciplinary trauma response teams are available 24 hours a day to assess and stabilize seriously injured patients at the following OhioHealth trauma designated locations:

- + **OhioHealth Grant Medical Center — Level I Trauma Center**
 - One of the most active and fastest growing trauma centers in central Ohio
 - Re-verified as a Level I Trauma Center since 1993
- + **OhioHealth Riverside Methodist Hospital — Level II Trauma Center**
 - One of the most active Level II Trauma Centers in central Ohio
 - Connected to the new OhioHealth Neuroscience Center
- + **OhioHealth MedCentral Mansfield Hospital — Level II Trauma Center**
 - Serving as the only trauma center in Richland County and surrounding 60 mile radius
 - 34,000 square foot surgery department with 10 new surgery suites plus two new open-heart surgery suites

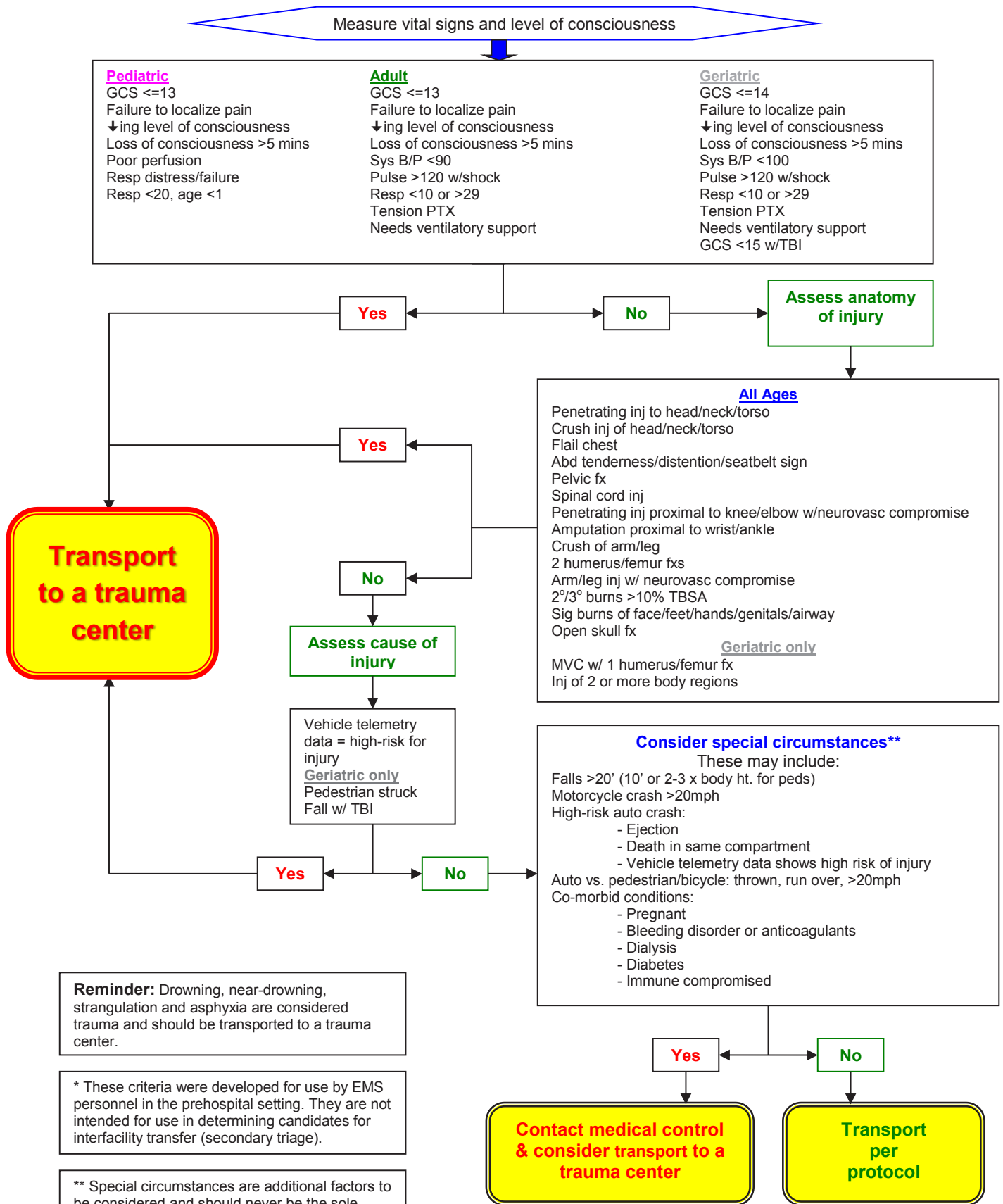


A FAITH-BASED, NOT-FOR-PROFIT HEALTHCARE SYSTEM

RIVERSIDE METHODIST HOSPITAL + GRANT MEDICAL CENTER + DOCTORS HOSPITAL + GRADY MEMORIAL HOSPITAL
 DUBLIN METHODIST HOSPITAL + HARDIN MEMORIAL HOSPITAL + MARION GENERAL HOSPITAL + REHABILITATION HOSPITAL
 O'BLENESS HOSPITAL + MEDCENTRAL MANSFIELD HOSPITAL + MEDCENTRAL SHELBY HOSPITAL + WESTERVILLE MEDICAL CAMPUS
 HEALTH AND SURGERY CENTERS + PRIMARY AND SPECIALTY CARE + URGENT CARE + WELLNESS + HOSPICE + HOME CARE
 28,000 PHYSICIANS, ASSOCIATES & VOLUNTEERS

© OhioHealth Inc. 2015. All rights reserved. FY15-119-2250. REV 02/15.

Ohio Prehospital Trauma Triage Decision Tree – 2014 Update*



Reminder: Drowning, near-drowning, strangulation and asphyxia are considered trauma and should be transported to a trauma center.

* These criteria were developed for use by EMS personnel in the prehospital setting. They are not intended for use in determining candidates for interfacility transfer (secondary triage).

** Special circumstances are additional factors to be considered and should never be the sole reason for triaging a patient to a trauma center.

When in doubt, transport to a trauma center!